



R MAISON



Artist's Impression
The Maisons

a classic plot, a love dialogue

Leveraging on the natural terrain of hills and valleys in the Braddell location, The Maisons are inspired by a baronial architectural style, the masonry conveying enduring strength and resilience. The terraced levels, lavish amenities and contemporary interiors provide a balance of modernity and timeless tradition.

The scented woods, pleasure gardens and verdant avenues act as the perfect counterpoint to the classic elegance of stone, creating a landscape that is contiguous with a bygone era of romance and eminence.

THE MAISONS



A love nest for newlyweds, a home for your first child, or a space for a larger family to enjoy, The Maisons are designed to accommodate all your needs. Choose from cozy one-bedroom apartments, deluxe lofts for cosmopolitan style, or exclusive penthouses with a kitchenette on the upper floor for perfect privacy and convenience. The Group's main directive for The Maisons are livable, family-centric layouts that complement the various life stages of the homeowner.



THE MAISONS

*where exquisite living is encapsulated in a collection
of two distinguished developments.*

	R Maison & E Maison		0m
	Woodleigh MRT	North East Line	approx 0.52km
	Serangoon MRT	Circle Line North East Line Interchange	approx 0.84km
	Primary	Maris Stella High School (Pri School) Yangzheng Pri School Cedar Pri School CHIJ Our Lady of Good Counsel First Toa Payoh Pri School Kuo Chuan Presbyterian Pri School Paya Lebar Methodist Girls' School Pei Chun Public School St Andrew's Junior School	approx 1.01km approx 0.66km approx 1.11km approx 1.74km approx 1.55km approx 1.71km approx 1.92km approx 1.66km approx 1.40km
	Secondary	Catholic High School (Sec School) Raffles Institution Cedar Girls' Secondary School St. Andrew's Secondary School Paya Lebar Methodist Girls' School	approx 2.99km approx 2.65km approx 1.09km approx 1.35km approx 1.92km
	Tertiary	St. Andrew's Junior College Nanyang Junior College Raffles Junior College	approx 1.34km approx 0.93km approx 3.09km
	International	Stamford American International School Australian International School Lycée Français de Singapour	approx 0.63km approx 1.39km approx 3.10km
	University	Singapore Management University	approx 5.53km
	Major Shopping Malls & District	Nex Junction 8 Orchard Road	approx 0.90km approx 2.41km approx 5.59km
	Major Business Districts	CBD Future Paya Lebar iPark Future Seletar Aerospace Park	approx 6.90km approx 2.36km approx 7.46km
	Popular Eateries	Chomp Chomp Food Centre/ Serangoon Gardens	approx 2.35km
	Healthcare	Tan Tock Seng Hospital Mount Alvernia Hospital	approx 3.52km approx 3.51km
	Parks & Gardens	MacRitchie Reservoir Park Bishan – Ang Mo Kio Park	approx 4.04km approx 3.09km
	Upcoming Major Development	Future Bidadari Township project which will bring about excellent supporting amenities	

Global Star Development Pte. Ltd. makes the material on this page available on the understanding that users exercise their discretion with respect to its use. Before relying on the material in any important matter, users should carefully evaluate the accuracy, completeness and relevance of the information.

city-fringe living

The Maisons are perfectly situated to straddle home, work and the pleasures of leisure and entertainment. Nestled in the heart of the island, your proximity to tranquil nature is equal only to the excitement of city living that is mere minutes away. Embrace the opportunity to have it all within reach.

LOCALITY





a love story, retold

She gazes out into the twilight, cocooned by the contentment of a comfortable home. Careful attention to the details are her delight, as she flits between her private home, secluded gardens and community living. Tactile pleasures charm, with the functionality of the living spaces meeting the finest of forms.

R MAISON



Artist's Impression
R Maison



R MAISON



Braddell Road

- R1 Athletes' Bay (Gymnasium)
- R2 Club Deck (Open Function Area)
- R3 Welkin Spring (Rooftop Jacuzzi)
- R4 Chess Garden (Themed Garden)
- R5 Moon Deck (Sun Deck)
- R6 Floral Grove (Themed Garden)

- R7 Celestial Spring (Swimming Pool)
- R8 Meditation Garden (Meditation / Yoga Area)
- R9 Little Tub (Children's Pool)
- R10 Maison Grill (BBQ Pits)
- R11 Little Playpen (Children's Play Area)



R MAISON

The plans are subject to change as may be required or approved by the relevant authorities. Areas are estimates only and are subject to final survey. Plans are not drawn to scale and do not form part of the contract.



1st Storey

UNIT TYPES	NOS. OF BEDROOM	UNIT TYPES	NOS. OF BEDROOM	UNIT TYPES	NOS. OF BEDROOM
A1	1 Classic (1 Bedroom)	B1a	3 Compact (2+1 Bedroom)	PH1	2 Deluxe Penthouse (2 Bedroom Penthouse)
A2	2 Compact (1+1 Bedroom)	B1b	3 Compact (2+1 Bedroom)	PH1a	2 Deluxe Penthouse (2 Bedroom Penthouse)
A3	2 Compact Loft (1+1 Bedroom Loft)	B1c	3 Compact (2+1 Bedroom)	PH2	3 Compact Penthouse (2+1 Bedroom Penthouse)
A4	2 Compact Loft (1+1 Bedroom Loft)	B2	2 Deluxe (2 Bedroom)	PH2a	3 Compact Penthouse (2+1 Bedroom Penthouse)
		Cb1	3 Deluxe (3 Bedroom)	PH2b	2+1 Bedroom Penthouse
		Cb2	3 Deluxe (3 Bedroom)	PH3a	3 Deluxe Loft Penthouse (3 Bedroom Loft Penthouse)
				PH3b	3 Deluxe Loft Penthouse (3 Bedroom Loft Penthouse)
				PH4	2 Deluxe Penthouse (2 Bedroom Penthouse)



R MAISON

The plans are subject to change as may be required or approved by the relevant authorities. Areas are estimates only and are subject to final survey. Plans are not drawn to scale and do not form part of the contract.



2nd Storey

UNIT TYPES NOS. OF BEDROOM

A1	1 Classic (1 Bedroom)
A2	2 Compact (1+1 Bedroom)
A3	2 Compact Loft (1+1 Bedroom Loft)
A4	2 Compact Loft (1+1 Bedroom Loft)

UNIT TYPES NOS. OF BEDROOM

B1a	3 Compact (2+1 Bedroom)
B1b	3 Compact (2+1 Bedroom)
B1c	3 Compact (2+1 Bedroom)
B2	2 Deluxe (2 Bedroom)
Cb1	3 Deluxe (3 Bedroom)
Cb2	3 Deluxe (3 Bedroom)

UNIT TYPES NOS. OF BEDROOM

PH1	2 Deluxe Penthouse (2 Bedroom Penthouse)
PH1a	2 Deluxe Penthouse (2 Bedroom Penthouse)
PH2	3 Compact Penthouse (2+1 Bedroom Penthouse)
PH2a	3 Compact Penthouse (2+1 Bedroom Penthouse)
PH2b	2+1 Bedroom Penthouse
PH3a	3 Deluxe Loft Penthouse (3 Bedroom Loft Penthouse)
PH3b	3 Deluxe Loft Penthouse (3 Bedroom Loft Penthouse)
PH4	2 Deluxe Penthouse (2 Bedroom Penthouse)



R MAISON

The plans are subject to change as may be required or approved by the relevant authorities. Areas are estimates only and are subject to final survey. Plans are not drawn to scale and do not form part of the contract.



3rd Storey

UNIT TYPES	NOS. OF BEDROOM	UNIT TYPES	NOS. OF BEDROOM	UNIT TYPES	NOS. OF BEDROOM
A1	1 Classic (1 Bedroom)	B1a	3 Compact (2+1 Bedroom)	PH1	2 Deluxe Penthouse (2 Bedroom Penthouse)
A2	2 Compact (1+1 Bedroom)	B1b	3 Compact (2+1 Bedroom)	PH1a	2 Deluxe Penthouse (2 Bedroom Penthouse)
A3	2 Compact Loft (1+1 Bedroom Loft)	B1c	3 Compact (2+1 Bedroom)	PH2	3 Compact Penthouse (2+1 Bedroom Penthouse)
A4	2 Compact Loft (1+1 Bedroom Loft)	B2	2 Deluxe (2 Bedroom)	PH2a	3 Compact Penthouse (2+1 Bedroom Penthouse)
		Cb1	3 Deluxe (3 Bedroom)	PH2b	2+1 Bedroom Penthouse
		Cb2	3 Deluxe (3 Bedroom)	PH3a	3 Deluxe Loft Penthouse (3 Bedroom Loft Penthouse)
				PH3b	3 Deluxe Loft Penthouse (3 Bedroom Loft Penthouse)
				PH4	2 Deluxe Penthouse (2 Bedroom Penthouse)



R MAISON

The plans are subject to change as may be required or approved by the relevant authorities. Areas are estimates only and are subject to final survey. Plans are not drawn to scale and do not form part of the contract.



4th Storey

UNIT TYPES	NOS. OF BEDROOM	UNIT TYPES	NOS. OF BEDROOM	UNIT TYPES	NOS. OF BEDROOM
A1	1 Classic (1 Bedroom)	B1a	3 Compact (2+1 Bedroom)	PH1	2 Deluxe Penthouse (2 Bedroom Penthouse)
A2	2 Compact (1+1 Bedroom)	B1b	3 Compact (2+1 Bedroom)	PH1a	2 Deluxe Penthouse (2 Bedroom Penthouse)
A3	2 Compact Loft (1+1 Bedroom Loft)	B1c	3 Compact (2+1 Bedroom)	PH2	3 Compact Penthouse (2+1 Bedroom Penthouse)
A4	2 Compact Loft (1+1 Bedroom Loft)	B2	2 Deluxe (2 Bedroom)	PH2a	3 Compact Penthouse (2+1 Bedroom Penthouse)
		Cb1	3 Deluxe (3 Bedroom)	PH2b	2+1 Bedroom Penthouse
		Cb2	3 Deluxe (3 Bedroom)	PH3a	3 Deluxe Loft Penthouse (3 Bedroom Loft Penthouse)
				PH3b	3 Deluxe Loft Penthouse (3 Bedroom Loft Penthouse)
				PH4	2 Deluxe Penthouse (2 Bedroom Penthouse)



R MAISON

The plans are subject to change as may be required or approved by the relevant authorities. Areas are estimates only and are subject to final survey. Plans are not drawn to scale and do not form part of the contract.



UNIT TYPES NOS. OF BEDROOM

A1	1 Classic (1 Bedroom)
A2	2 Compact (1+1 Bedroom)
A3	2 Compact Loft (1+1 Bedroom Loft)
A4	2 Compact Loft (1+1 Bedroom Loft)

UNIT TYPES NOS. OF BEDROOM

B1a	3 Compact (2+1 Bedroom)
B1b	3 Compact (2+1 Bedroom)
B1c	3 Compact (2+1 Bedroom)
B2	2 Deluxe (2 Bedroom)
Cb1	3 Deluxe (3 Bedroom)
Cb2	3 Deluxe (3 Bedroom)

UNIT TYPES NOS. OF BEDROOM

PH1	2 Deluxe Penthouse (2 Bedroom Penthouse)
PH1a	2 Deluxe Penthouse (2 Bedroom Penthouse)
PH2	3 Compact Penthouse (2+1 Bedroom Penthouse)
PH2a	3 Compact Penthouse (2+1 Bedroom Penthouse)
PH2b	2+1 Bedroom Penthouse
PH3a	3 Deluxe Loft Penthouse (3 Bedroom Loft Penthouse)
PH3b	3 Deluxe Loft Penthouse (3 Bedroom Loft Penthouse)
PH4	2 Deluxe Penthouse (2 Bedroom Penthouse)



R MAISON

The plans are subject to change as may be required or approved by the relevant authorities. Areas are estimates only and are subject to final survey. Plans are not drawn to scale and do not form part of the contract.



Attic

UNIT TYPES	NOS. OF BEDROOM	UNIT TYPES	NOS. OF BEDROOM	UNIT TYPES	NOS. OF BEDROOM
A1	1 Classic (1 Bedroom)	B1a	3 Compact (2+1 Bedroom)	PH1	2 Deluxe Penthouse (2 Bedroom Penthouse)
A2	2 Compact (1+1 Bedroom)	B1b	3 Compact (2+1 Bedroom)	PH1a	2 Deluxe Penthouse (2 Bedroom Penthouse)
A3	2 Compact Loft (1+1 Bedroom Loft)	B1c	3 Compact (2+1 Bedroom)	PH2	3 Compact Penthouse (2+1 Bedroom Penthouse)
A4	2 Compact Loft (1+1 Bedroom Loft)	B2	2 Deluxe (2 Bedroom)	PH2a	3 Compact Penthouse (2+1 Bedroom Penthouse)
		Cb1	3 Deluxe (3 Bedroom)	PH2b	2+1 Bedroom Penthouse
		Cb2	3 Deluxe (3 Bedroom)	PH3a	3 Deluxe Loft Penthouse (3 Bedroom Loft Penthouse)
				PH3b	3 Deluxe Loft Penthouse (3 Bedroom Loft Penthouse)
				PH4	2 Deluxe Penthouse (2 Bedroom Penthouse)



R MAISON

The plans are subject to change as may be required or approved by the relevant authorities. Areas are estimates only and are subject to final survey. Plans are not drawn to scale and do not form part of the contract.

15

Unit layout plans

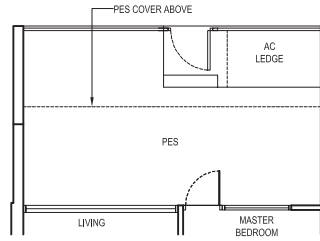
15-16 • R Maison

1 Classic (1 Bedroom)

Type:
A1 (p4) - pool deck view
(inclusive of PES & A/C Ledge)

69 sqm (743 sqft)

#01-05

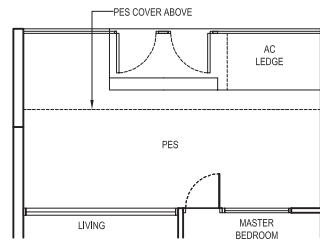


1 Classic (1 Bedroom)

Type:
A1 (p4) - pool view
(inclusive of PES & A/C Ledge)

69 sqm (743 sqft)

#01-04



1 Classic (1 Bedroom)

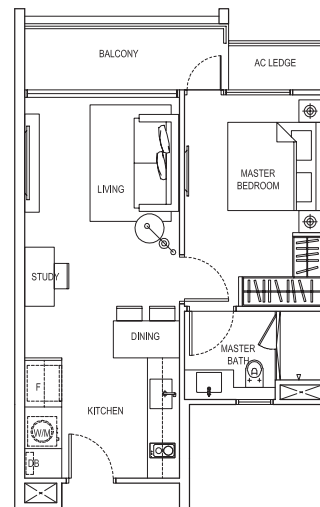
Type:
A1
(inclusive of Balcony & A/C Ledge)

54 sqm (581 sqft)

#02-04, #02-05, #03-04, #03-05,
#03-09, #04-04, #04-05, #04-09

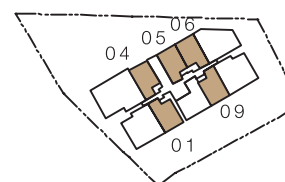
(MIRRORED)

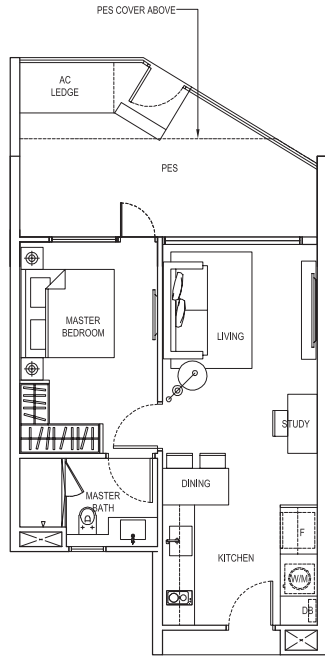
#02-01, #02-06, #03-01, #03-06,
#04-01, #04-06, #05-01, #05-06



R MAISON

The plans are subject to change as may be required or approved by the relevant authorities. Areas are estimates only and are subject to final survey. Plans are not drawn to scale and do not form part of the contract.

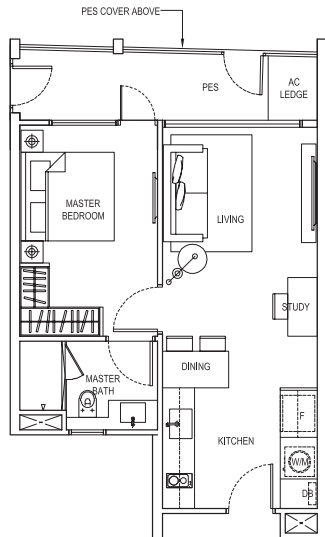




1 Classic (1 Bedroom)

Type:
A1 (p5)
 (inclusive of PES & A/C Ledge)
 64 sqm (689 sqft)

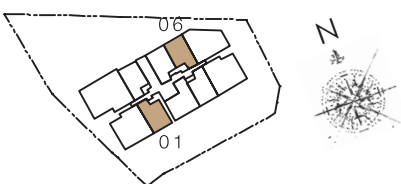
#01-06



1 Classic (1 Bedroom)

Type:
A1 (p9)
 (inclusive of PES & A/C Ledge)
 55 sqm (592 sqft)

#01-01



R MAISON

The plans are subject to change as may be required or approved by the relevant authorities. Areas are estimates only and are subject to final survey. Plans are not drawn to scale and do not form part of the contract.

17

Unit layout plans

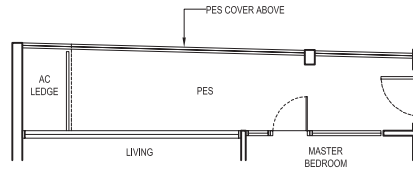
17-18 • R Maison

2 Compact (1+1 Bedroom)

Type:
A2 (p3)
(inclusive of PES & A/C Ledge)

65 sqm (700 sqft)

#01-10

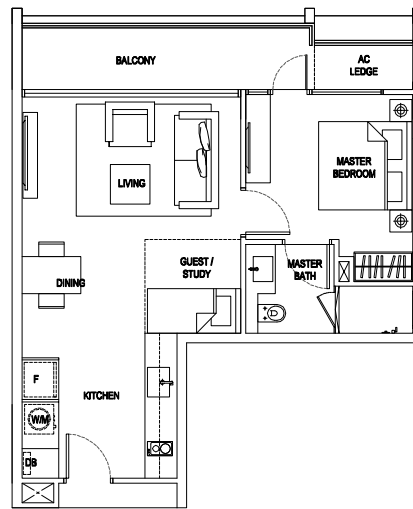


2 Compact (1+1 Bedroom)

Type:
A2
(inclusive of Balcony & A/C Ledge)

62 sqm (667 sqft)

#02-10, #03-10, #04-10



R MAISON

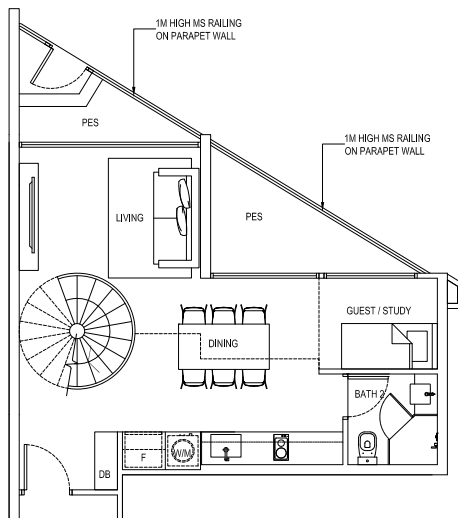
The plans are subject to change as may be required or approved by the relevant authorities. Areas are estimates only and are subject to final survey. Plans are not drawn to scale and do not form part of the contract.



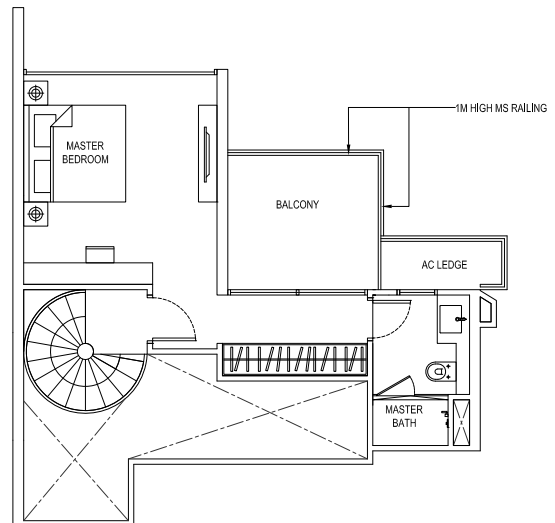
2 Compact Loft (1+1 Bedroom Loft)

Type:
A4
(inclusive of PES, Balcony & A/C Ledge)
110 sqm (1,184 sqft)

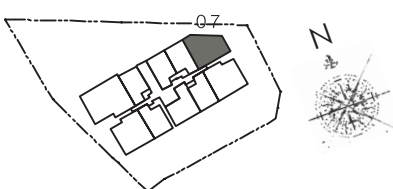
#01-07



LOWER LEVEL PLAN



UPPER LEVEL PLAN



R MAISON

The plans are subject to change as may be required or approved by the relevant authorities. Areas are estimates only and are subject to final survey. Plans are not drawn to scale and do not form part of the contract.

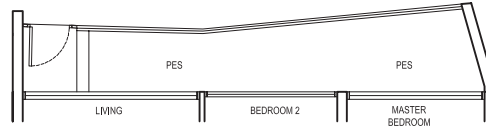
Unit layout plans

19-20 • R Maison

3 Compact (2+1 Bedroom)

Type:
B1a (p6)
(inclusive of PES & A/C Ledge)
88 sqm (947 sqft)

#01-02

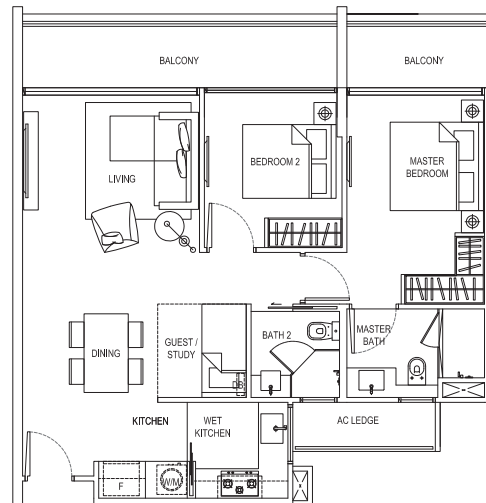


3 Compact (2+1 Bedroom)

Type:
B1a
(inclusive of Balcony & A/C Ledge)
87 sqm (936 sqft)

#02-02, #03-02, #04-02, #05-02

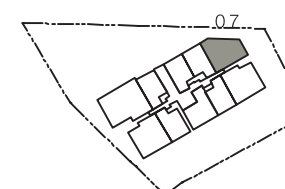
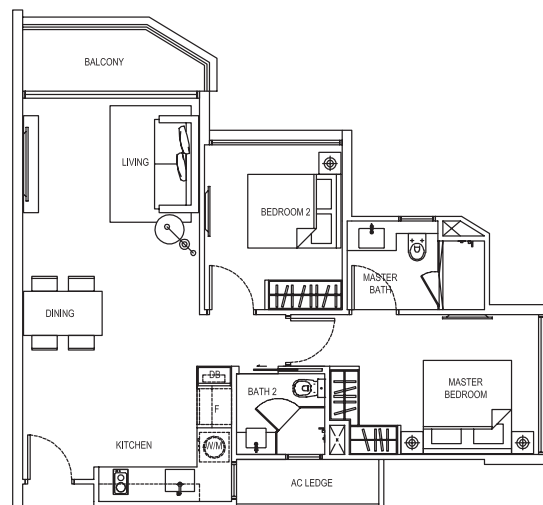
(MIRRORED)
#03-08, #04-08



2 Deluxe (2 Bedroom)

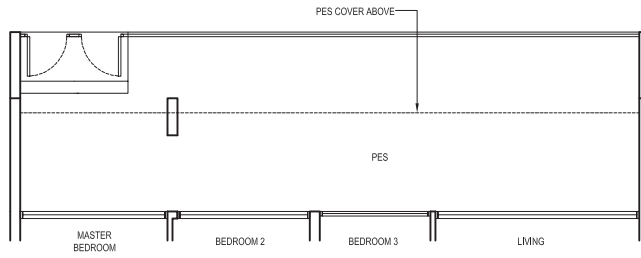
Type:
B2
(inclusive of Balcony & A/C Ledge)
75 sqm (807 sqft)

#03-07, #04-07



R MAISON

The plans are subject to change as may be required or approved by the relevant authorities. Areas are estimates only and are subject to final survey. Plans are not drawn to scale and do not form part of the contract.

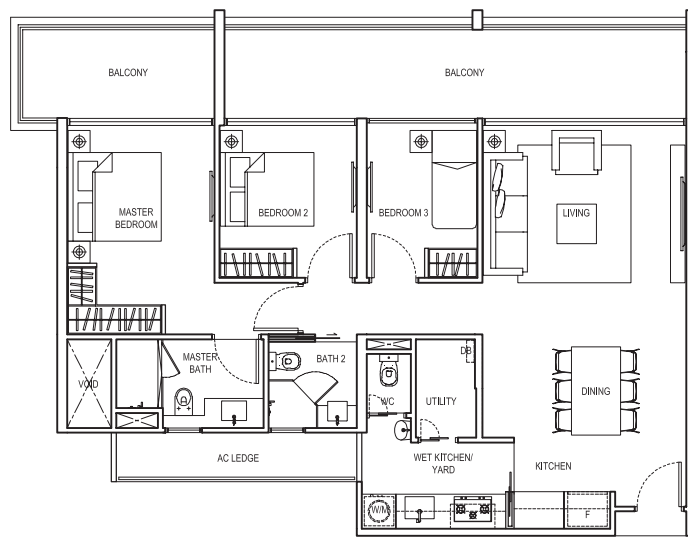


3 Deluxe (3 Bedroom)

Type:
Cb2 (p1)
(inclusive of PES & A/C Ledge)

144 sqm (1,550 sqft)

#01-03



3 Deluxe (3 Bedroom)

Type:
Cb2
(inclusive of Balcony & A/C Ledge)

123 sqm (1,324 sqft)

#02-03, #03-03, #04-03



R MAISON

The plans are subject to change as may be required or approved by the relevant authorities. Areas are estimates only and are subject to final survey. Plans are not drawn to scale and do not form part of the contract.

21

Unit layout plans

21-22 • R Maison

2 Deluxe Penthouse

(2 Bedroom Penthouse)

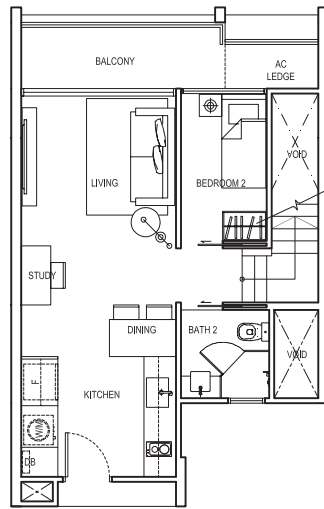
Type:

PH1

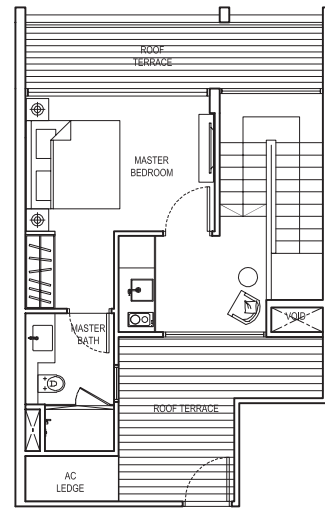
(inclusive of Balcony, Terrace & A/C Ledge)

108 sqm (1,163 sqft)

#05-04, #05-09



LOWER LEVEL PLAN



UPPER LEVEL PLAN



R MAISON

The plans are subject to change as may be required or approved by the relevant authorities. Areas are estimates only and are subject to final survey. Plans are not drawn to scale and do not form part of the contract.

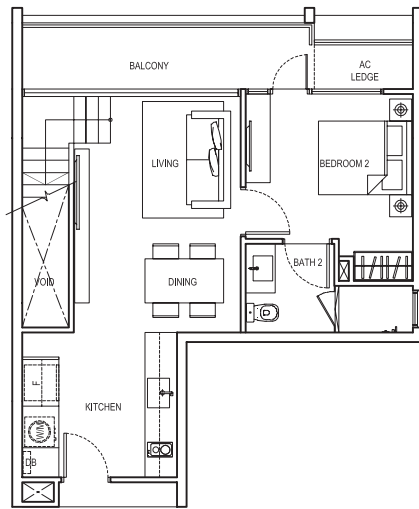


2 Deluxe Penthouse
(2 Bedroom Penthouse)

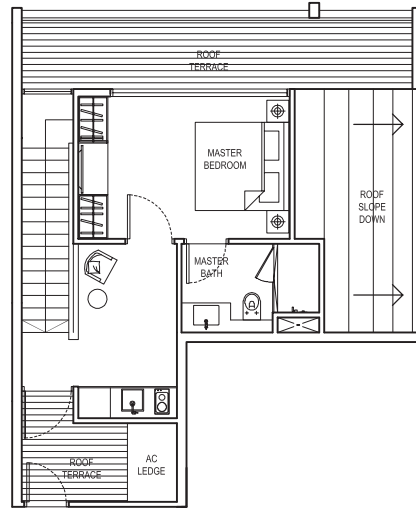
Type:
PH1a
(inclusive of Balcony, Terrace & A/C Ledge)

114 sqm (1,227 sqft)

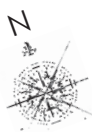
#05-10



LOWER LEVEL PLAN



UPPER LEVEL PLAN



R MAISON

The plans are subject to change as may be required or approved by the relevant authorities. Areas are estimates only and are subject to final survey. Plans are not drawn to scale and do not form part of the contract.

23

Unit layout plans

23-24 • R Maison

3 Compact Penthouse

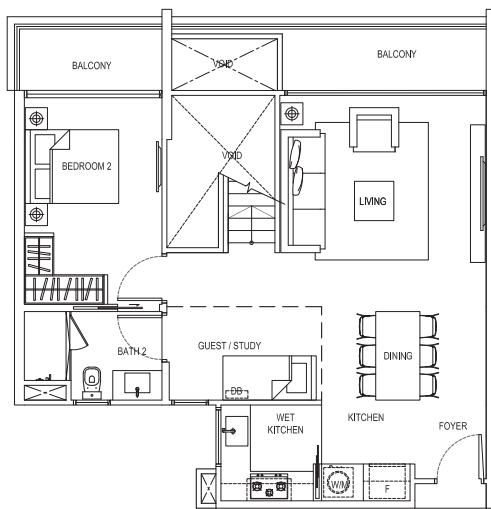
(2+1 Bedroom Penthouse)

Type:
PH2

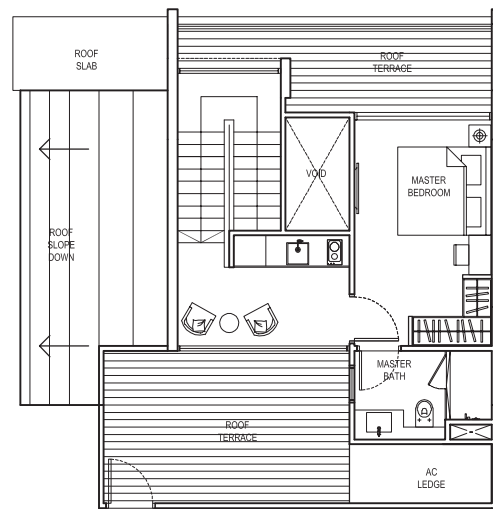
(inclusive of Balcony, Terrace & A/C Ledge)

150 sqm (1,615 sqft)

#05-08



LOWER LEVEL PLAN



UPPER LEVEL PLAN



R MAISON

The plans are subject to change as may be required or approved by the relevant authorities. Areas are estimates only and are subject to final survey. Plans are not drawn to scale and do not form part of the contract.



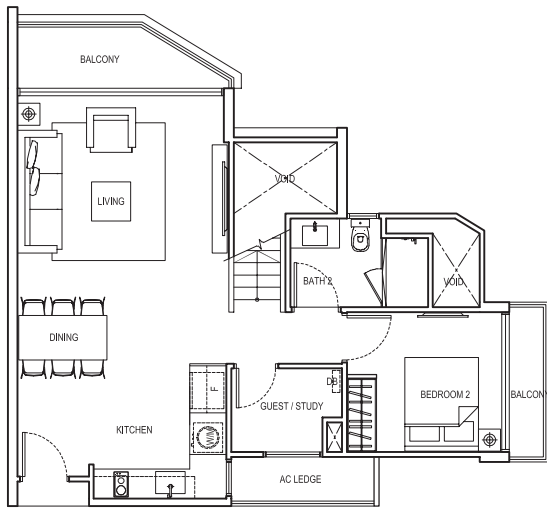
2+1 Bedroom Penthouse

Type:
PH2b

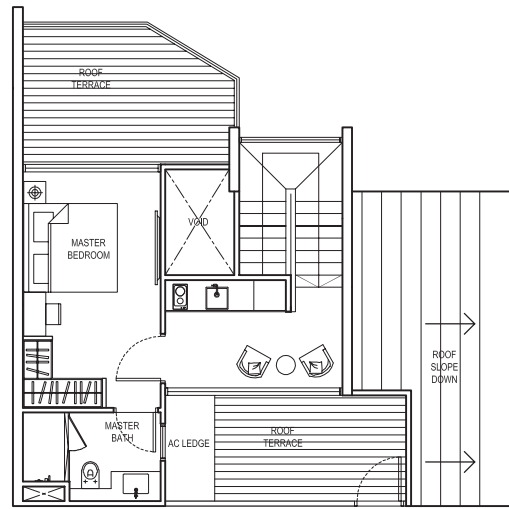
(inclusive of Balcony, Terrace & A/C Ledge)

136 sqm (1,464 sqft)

#05-07



LOWER LEVEL PLAN



UPPER LEVEL PLAN



R MAISON

The plans are subject to change as may be required or approved by the relevant authorities. Areas are estimates only and are subject to final survey. Plans are not drawn to scale and do not form part of the contract.

25

Unit layout plans

25-26 • R Maison

3 Deluxe Loft Penthouse

(3 Bedroom Loft Penthouse)

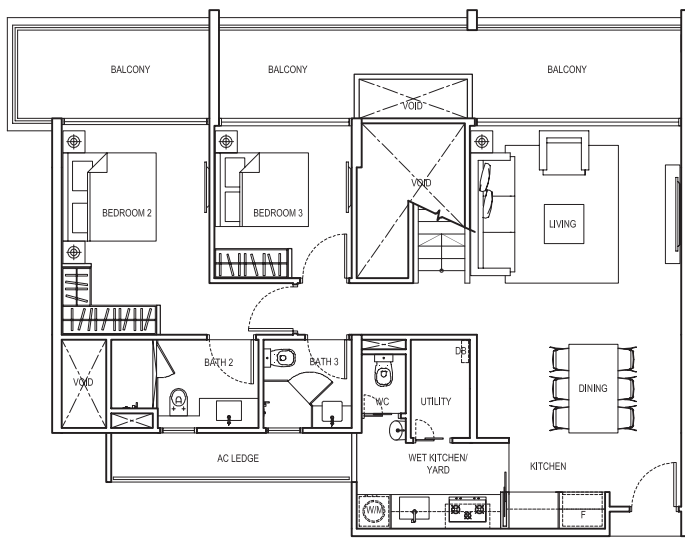
Type:

PH3b

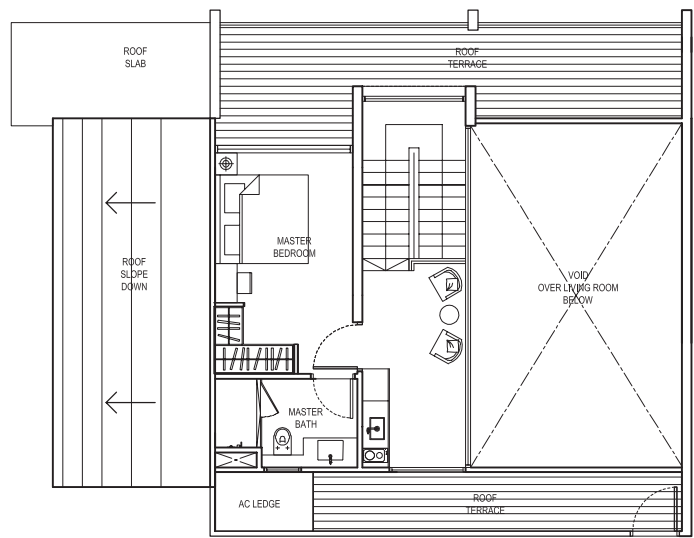
(inclusive of Balcony, Terrace & A/C Ledge)

219 sqm (2,357 sqft)

#05-03



LOWER LEVEL PLAN

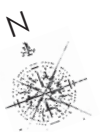


UPPER LEVEL PLAN



R MAISON

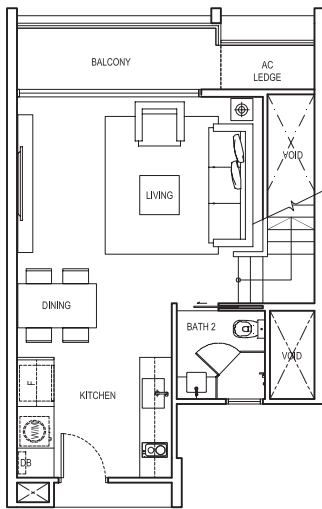
The plans are subject to change as may be required or approved by the relevant authorities. Areas are estimates only and are subject to final survey. Plans are not drawn to scale and do not form part of the contract.



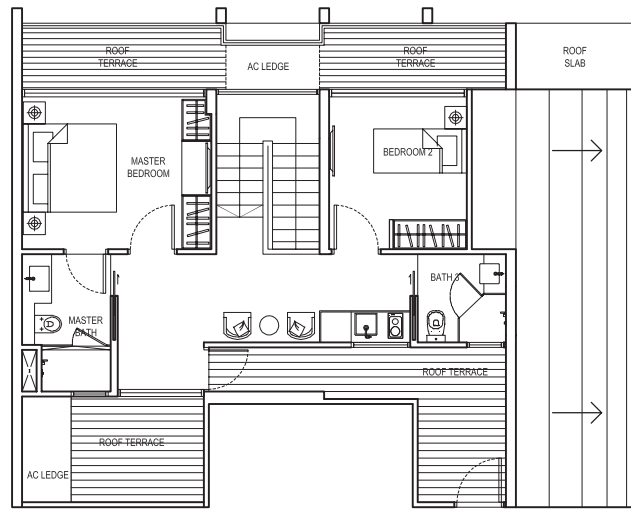
2 Deluxe Penthouse
(2 Bedroom Penthouse)

Type:
PH4
(inclusive of Balcony, Terrace & A/C Ledge)
137 sqm (1,475 sqft)

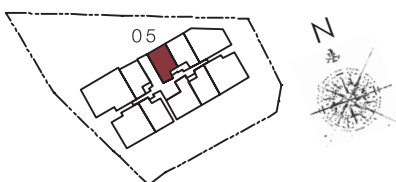
#05-05



LOWER LEVEL PLAN



UPPER LEVEL PLAN



R MAISON

The plans are subject to change as may be required or approved by the relevant authorities. Areas are estimates only and are subject to final survey. Plans are not drawn to scale and do not form part of the contract.

1) FOUNDATION

Reinforced concrete bored piles.

2) SUPERSTRUCTURE

Reinforced concrete structure.

3) WALLS

- a) External Wall – in-situ and/or pre-cast reinforced concrete wall and/or masonry wall
- b) Internal Wall – masonry and/or reinforced concrete and/or lightweight concrete panels and/or pre-cast wall panels and/or dry wall partition system

4) ROOF

Reinforced concrete roof and/or metal roof with heat insulation and waterproofing system.

5) CEILING

- a) Apartment Unit
Skim coat and/or ceiling boards with emulsion paint to living, dining, bedrooms, study, kitchen, wet kitchen, yard, baths and internal staircase, where applicable.
- b) Common Areas
 - 1) Skim coat and/or ceiling boards with emulsion paint to lift lobbies, corridor, gym and handicapped toilet.
 - 2) Skim coat and/or ceiling boards with emulsion paint to staircase, carpark and driveway.

6) FINISHES

- a) WALL FINISHES
 - 1) Apartment Unit – Internal (finishes applied up to false ceiling level and exposed areas only)
For all unit types:
 - i) Plaster and/or skim coat with emulsion paint to living, dining, bedrooms, study, yard and internal staircase, where applicable.
 - ii) Homogenous and/or ceramic and/or porcelain tiles to master bath, where applicable.
 - iii) Homogenous and/or ceramic and/or porcelain tiles to bath 2 and bath 3, where applicable.
 - iv) Homogenous and/or ceramic and/or porcelain tiles to kitchen, wet kitchen and WC, where applicable.
 - 2) Apartment Unit – External
 - i) Natural stone and/or plaster and/or skim coat with emulsion / spray textured paint to balcony, roof terrace, PES and private roof terrace, where applicable.
 - ii) Metal railing to balcony and roof terrace, where applicable.
 - iii) Parapet wall with metal railing to PES, where applicable.
 - 3) Common Areas – Internal
 - i) Homogenous and/or ceramic and/or porcelain tiles and/or plaster and/or skim coat with emulsion and/or textured paint to lift lobbies.
 - ii) Plaster and/or skim coat with emulsion and/or textured paint and/or glass to passageways and gymnasium.
 - iii) Homogenous and/or ceramic and/or porcelain tiles to handicapped toilet.
 - iv) Plaster and/or skim coat with emulsion paint to carpark, corridor and staircase.
 - 4) Common Areas – External
 - i) Homogenous and/or ceramic and/or porcelain tiles and/or pebble wash finish and/or plaster and/or skim coat with emulsion and/or spray textured paint to wall.
 - ii) Natural stone and/or homogenous tiles and/or ceramic tiles and/or mosaic to water feature.
- b) FLOOR FINISHES
 - 1) Apartment Unit
 - i) Compressed marble with matching skirting to living, dining, kitchen and study (except unit PH2b).
 - ii) Homogenous tiles to wet kitchen, master bath, bath 2 & bath 3, utility room, yard and WC, where applicable.
 - iii) Laminated flooring with matching skirting to bedrooms and study room (for unit PH2b), where applicable.
 - iv) Laminated flooring to internal unit staircase, where applicable.
 - v) Homogenous tiles with matching skirting to balcony, PES and private roof terrace, where applicable.
 - 2) Common Areas – Internal
 - i) Homogenous tiles with matching skirting to lift lobbies.
 - ii) Laminated flooring and/or vinyl flooring and/or carpet to gymnasium.
 - iii) Homogenous and/or ceramic and/or porcelain tiles to handicapped toilet.
 - 3) Common Areas – External
 - i) Timber strip and/or natural stone and/or homogenous and/or ceramic and/or reconstituted stone tiles and/or pebble wash finishes to pool decks, open deck, walkway, linkway and footpath.
 - ii) Ceramic tiles and/or mosaic to swimming pool, lap pool, children's pool and Jacuzzi.
 - iii) Natural stone and/or ceramic tiles and/or mosaic to water feature and reflective pools.
 - iv) Natural stone and/or homogenous and/or ceramic tiles and/or pebble wash and/or timber strip to communal outdoor pavilions.

7) WINDOWS

Aluminium framed windows with glass, where applicable.

- a) Top-hung window, sliding window and/or fixed panel to baths where applicable.
- b) Top-hung window, casement window, sliding window and/or fixed panel to all bedrooms and study, where applicable.
- c) Casement window, sliding window and/or fixed panel to kitchen where applicable.
- d) Top-hung window, louvered window and/or fixed panel to WC.
- e) Casement and/or sliding window and/or fixed panel to internal staircase.

8) DOORS

- a) Fire-rated solid timber swing door to unit main entrance.
- b) Hollow core timber swing door to bedrooms, baths and study, where applicable.
- c) Frameless glass sliding door to kitchen.
- d) Aluminium framed glass sliding door and/or swing door to balcony, roof terrace and PES, where applicable.
- e) Sliding foldable PVC door to WC and Utility.
- f) Good quality locksets and ironmongery to be provided.

9) SANITARY FITTINGS

- a) Master bath 1 solid surface vanity top with 1 basin with basin mixer, 1 mirror, 1 towel rail, 1 shower compartment with 1 shower mixer, 1 hand shower and 1 overhead rose, 1 water closet, 1 robe hook and 1 toilet paper holder.
- b) Bath 2 and 3 (where applicable) 1 solid surface vanity top with 1 wash basin with basin mixer, 1 mirror, 1 towel rail, 1 shower compartment with 1 shower mixer and hand shower, 1 water closet, 1 robe hook and 1 toilet paper holder.
- c) WC (where applicable) 1 wash basin with tap, 1 shower set with bib tap, 1 water closet and 1 toilet paper holder.
- d) Yard, PES and Private Roof Terrace (where applicable) 1 bib tap.

10) ELECTRICAL INSTALLATION, TV & TELEPHONE

- a) Wiring for lighting and power shall be in concealed conduits where possible except for spaces within DB closet, areas above false ceilings, which will be in exposed conduits and/or trunking.
Refer to electrical schedule.

11) LIGHTNING PROTECTION

Lightning protection system shall be provided in accordance with Singapore Standard SS 555.

12) PAINTING

- a) External Wall: External emulsion paint and/or textured paint coating.
- b) Internal Wall: Emulsion paint to internal walls and ceiling.

13) WATERPROOFING

- a) Apartment Unit
 - i) Waterproofing to floor of baths, wet kitchen, balcony, roof terrace, WC and private roof terrace, where applicable.
- b) Common Areas
 - i) Waterproofing to RC flat roof, lap pool, kid's pool, pool deck, water feature, reflective pool, handicapped toilet, basement carpark and landscape areas, where applicable.

14) DRIVEWAY AND CARPARK

- a) Reinforced concrete slab with floor hardener at basement driveway, ramp and carpark.
- b) Reinforced concrete slab with natural stones and/or interlocking concrete paving to surface driveway and drop-off areas.

15) RECREATION FACILITIES

- Gymnasium
- Open Function Area
- Rooftop Jacuzzi
- Themed Garden
- Sun Deck
- Swimming Pool
- Meditation / Yoga Area
- Children's Pool
- BBQ Pit
- Children's Play Area

16) ADDITIONAL ITEMS

- a) Kitchen cabinets with counter top c/w stainless steel sink and mixers, cooker hob, hood and free-standing fridge for all unit types.
- b) Built-in convection oven for kitchen.
- c) Built-in washer and dryer or washer cum dryer.
- d) Built-in hob, fridge, under-counter sink with mixers and microwave oven at upper floor of penthouse units.
- e) Built-in wardrobes provided for all bedrooms.
- f) Multi split air-conditioning system to living, dining, bedrooms and study.
- g) Hot water supply to all baths (except WC) and kitchen.
- h) Metal gate at PES.
- i) Security:
 - i) Audio intercom system between Basement Lift Lobbies / 1st Storey Lift Lobby and all apartment units.
 - ii) Card Access System to lifts.

ELECTRICAL SCHEDULE

Type of Unit / Provision	A1, A1(p4), A1(p5), A1(p9)	A2, A2(p3)	A4	B1a, B1a(p6),	B2	Cb2, Cb2(p1)	PH1	PH1a	PH2	PH2b	PH3b	PH4
Lighting Point	9	10	15	16	12	19	18	20	23	22	30	21
Power Point	14	14	14	18	17	21	19	18	19	20	22	18
Hob Point	1	1	1	1	1	1	1	1	1	1	1	1
Cooker Hood Point	1	1	1	1	1	1	1	1	1	1	1	1
Microwave Oven Point	-	-	-	-	-	-	1	1	1	1	1	1
Conventional Oven Point	1	1	1	1	1	1	1	1	1	1	1	1
Refrigerator Point	1	1	1	1	1	1	2	2	2	2	2	2
Data Point	2	2	3	3	3	4	3	3	3	4	4	3
TV Point	2	2	3	3	3	4	3	3	3	4	4	3
Telephone Point	2	2	2	3	3	4	3	3	3	3	4	3
Washing Machine & Dryer	1	1	1	2	2	2	2	2	2	2	2	2
Bell Push c/w DC Bell Point	1	1	1	1	1	1	1	1	1	1	1	1
Intercom	1	1	1	1	1	1	1	1	1	1	1	1
Isolator	According to the number of Condensing Units for each Apartment											



Developer: Global Star Development Pte. Ltd. (Co. Reg No. 201114157E) • Name of Housing Project: R Maison • Tenure of Land: Freehold • Lot Number: 3692K PT, 6059X, 6060K PT & 6061N MK17 • Developer's Licence Number: C0977 • Expected Date of TOP: 30 June 2016 • Expected Date of Legal Completion: 30 June 2019

While all reasonable care has been taken in the preparation of this brochure, the construction of the scale model and the Sales Gallery (collectively "the Collaterals"), the developer and its agent(s) shall not be held responsible for any inaccuracies or omissions. The statements, information and depictions in the Collaterals shall not be regarded or relied upon as statements or representations of fact, and they are not intended to form any part of the contract for the sale of the housing units. Visual representations including models, drawings, illustrations, photographs, pictures, art renderings portray artistic impressions only, and are not to be taken as representations of fact. All plans and models are not to scale unless expressly stated and are subject to amendments as may be required by the developer or as may be required or approved by the relevant authorities. The brand, colour, and model of all materials, fittings, equipment, finishes, installations and appliances supplied shall be provided subject to the Developer's architect's selection, market availability and the sole discretion of the Developer. All information, contained in the Collaterals, including equipment, materials, fittings, finishes, installations and appliances description, plans and specifications are current at the time of printing, and are subject to such changes as are required by the developer or the relevant authorities. The floor areas stated in the brochure are approximate measurements and subject to final survey. The Sale and Purchase Agreement shall form the entire agreement between the developer and the purchaser and shall in no way be modified by any statements or representations (whether contained in this brochure or otherwise).

www.themaitions.com.sg